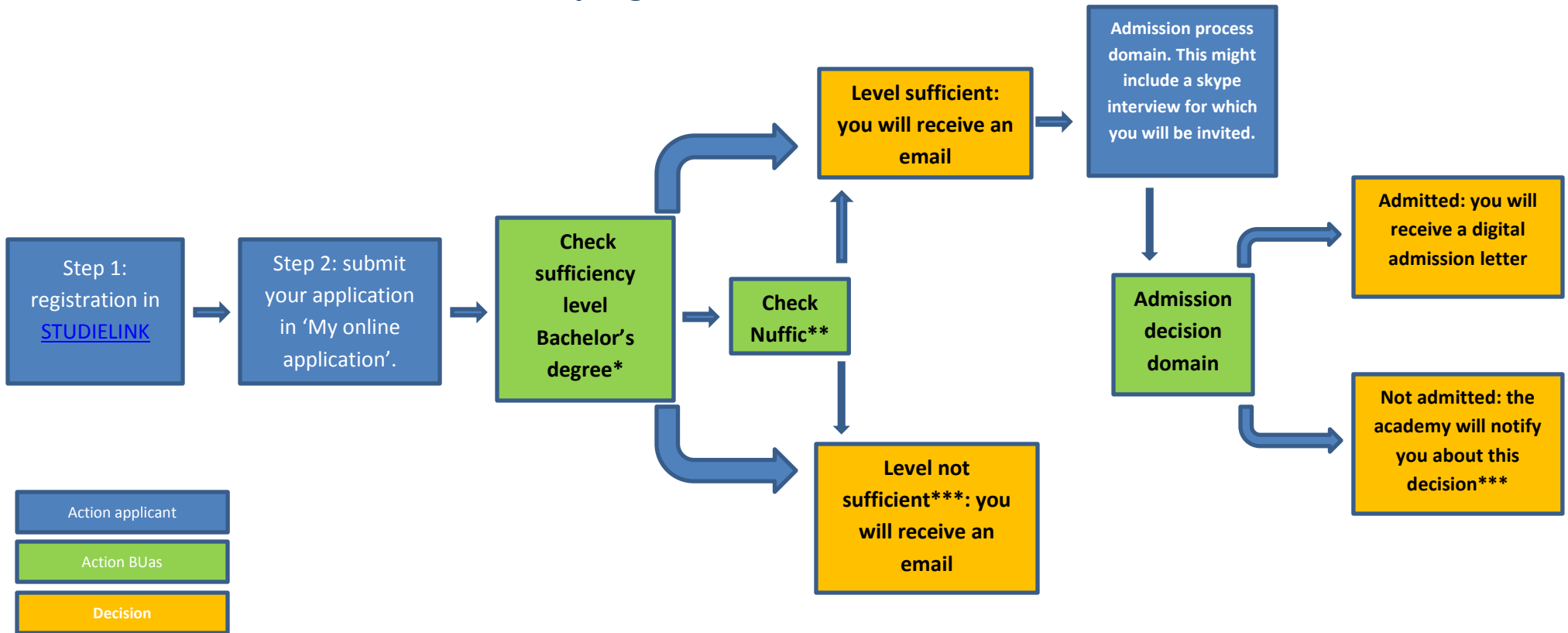


## Admission and selection process International applicants

### Master programmes



**\*Check sufficiency level bachelor's degree:** Breda University of Applied Sciences will check if you meet the educational requirements. This includes your previous education as well as the English test requirements. For admission to the academic master Leisure Studies, your bachelor needs to be an equivalent of a Dutch academic bachelor degree. For admission to the professional master programmes, your bachelor needs to be at least an equivalent of a Dutch professional bachelor degree. This is based on the information provided by Nuffic. For information on the English test requirements, please find the admission requirements on [www.buas.nl](http://www.buas.nl) under your programme of choice.

**\*\*Check Nuffic:** Breda University of Applied Sciences may send your file to [Nuffic](#) for evaluation and advice regarding your previous/current education. According to our policy Nuffic's advice is always leading in the decision making process.

#### **\*\*\*Complaints and grievances?**

**Not admitted:** Not selected for the Master programme of your choice and you do not agree? First contact the domain for more information. If you still do not agree with the decision and you wish to file an official objection, contact the [Dispute resolution committee](#).

**Level not sufficient:** You have been informed by Student Office that the level of your previous education is not sufficient and you do not agree? Please contact Student Office and explain why you do not agree with this decision, Student Office may provide more information. If you then still do not agree and you wish to file an official objection, you may contact the [Dispute resolution committee](#).